

Linthicum Elementary

Family Guide to Hybrid Learning  
2021



**We're Going Back!**

**Tiger GRIT Won't QUIT!**

## Arrival/Dismissal:

**\*\* Please note the highlighted changes to arrival and dismissal procedures\*\***

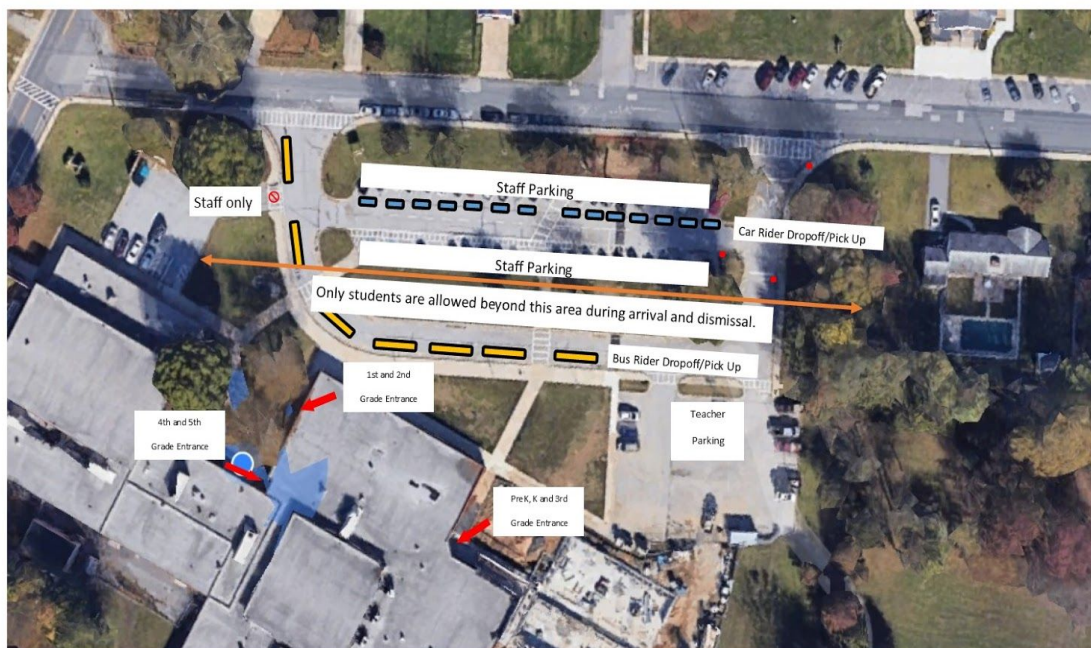
- ★ 9:10am - Doors open for students. Please note **\*\* For the safety and security of ALL students, no one will be permitted to enter the building prior to 9:10am. Staff will be required to attend meetings and complete planning/office duties in the morning. Staff is NOT available to monitor students prior to 9:10am. Please plan accordingly, especially in times of inclement weather.**
- ★ 3:45pm - Dismissal for PreK and K students ONLY (car riders and walkers - bus riders will be dismissed with student safeties)
- ★ 3:50pm - Dismissal for Students Grades 1-5 (Car riders, walkers, and buses)
- ★ 3:15pm - All early dismissals for students will end at 3:15pm. Any student that needs to be picked up before regular dismissal time will need to be signed out by 3:15pm. Otherwise, all students will be dismissed at the regular dismissal times.
- ★ Early Dismissals will follow new procedures. If you come to the school to pick up your child early, please be prepared to give information to the secretary through the doorbell video phone. You will be asked for the student's name and teacher as well as your name. Someone will come out to check your ID and you will sign your child out in the vestibule. As previously established, students will ONLY be released to those listed as emergency contacts. Please contact the office if someone else is being sent to pick up your child.

In conjunction with our transportation specialist and the Office of School Security, the following procedures will be effective 3/1/2021 for students' safety.

- ★ Car drop off will take place **IN** the main parking lot. Cars will form a single file line in the left lane of the parking lot. Students should exit the right side and family members must remain in the vehicle. Staff will be placed in the parking lot to direct traffic and to cross students at the crosswalk. **PLEASE FOLLOW THE DIRECTIONS OF STAFF AT ALL TIMES.**
- ★ Students should only exit their vehicles when in proximity to the crosswalk in the middle of the parking lot. Students should **NEVER** exit their vehicles on School Lane, Camp Meade Rd, etc.
- ★ Buses will use the front loop for drop off and pick up. **Do Not enter the bus lane for arrival and dismissal.**

- ★ Walkers will follow the sidewalks in front of the building to their respective entry doors. Family members will not be permitted to walk students to the doors.
- ★ In order to ensure appropriate distancing during arrival and dismissal, please adhere to the signs that will be posted asking families to remain in certain areas. We are unable to allow families to congregate in the courtyard area out front or in close proximity to the doors. Also, school security does not permit animals on school property. This can also cause congregating and creates potential safety concerns. Please refrain from bringing your pets to arrival/dismissal (and most of you know my love for dogs so this one pains me a little).
- ★ **IMPORTANT:** If your child has a difficult time entering the building, a staff member will work with you and your child to try and get him/her to walk into the building. Due to distancing expectations, if these attempts are not successful, we may suggest that your child goes home to learn virtually for the day and try again. If this is something you anticipate with your child, please contact the school to set up a time to try and bring your child in to get him/her acclimated.

Above all, please be patient as we work through these new procedures with student safety at the forefront. We will continue to evaluate the procedures and adjust as necessary. THANK YOU!



## Forgotten Items and Visitors to the Building:

- ★ If your child has forgotten items at home, you may bring the items to school and drop them off. When the secretary answers the doorbell, please be sure to let her know who the child is and what teacher he/she has. The door will be opened and you will leave the item on the table in the vestibule. A staff member will deliver the item to your child.
- ★ We will continue to conduct meetings and conferences virtually as much as possible. All visitors must have previously scheduled appointments with a staff member if entering the building for a meeting.

## Meals:

- ★ The USDA grant is in effect until the end of the 20-21 school year. This means ALL students will be provided with breakfast when they arrive in the morning.
- ★ ALL students, regardless of free/reduced lunch status, will receive a school lunch when attending hybrid.
- ★ There is still curbside lunch pickup for all students, even if they do not attend LES, from 12:00-12:30 each day.
- ★ All hybrid students will be provided with a bag of dinner and snack items prior to leaving for the day. We encourage all students to take one home otherwise the food will be wasted. There are often fresh vegetables that families can use when making dinner!

## Expectations:

- ★ When in the building, students will be required to wear a mask at all times.
- ★ Scheduled mask breaks will occur outside, with appropriate spacing, with a structured stretch activity prior to recess. Students will then be asked to put their masks back on before interacting with other students at recess.
- ★ Bathrooms - for those grades with community bathrooms in each quad, students will be instructed to look for a green "GO" sign on the bathroom door. As they enter the bathroom, students will be asked to flip the sign to the red "stop" sign and then back to green as they leave. We know this is a new routine and some students will forget. That

is ok! We will be reassuring students that if they walk in and someone is already using the bathroom, they can simply walk back out and wait.

- ★ Our health room has moved per direction from the county health department. Health room staff have very specific protocols to follow for students that are not feeling well. There is a sectioned off area for “quarantining” students until a parent arrives, should they display symptoms of covid.
- ★ Minor injuries will not be sent to the health room. Teachers will have access to band aids, lost tooth chests, and petroleum jelly for chapped lips.

## What else you need to know:

- ★ Each classroom will have an assigned midday monitor to supervise students during lunch, recess, and for literacy engage. All monitors have attended processing through human resources and have had background checks and fingerprinting conducted.
- ★ Students that are in the building for instruction will still need to bring his/her chromebook to school each day. Please use the chromebook case that was provided for taking it back and forth.
- ★ Students will not be on their chromebooks all day while in the building. However, there will be times when assignments are still located in the google classroom and will need to be accessed there. Students will still be able to interact with classmates learning virtually.
- ★ While social distancing is important and will be practiced, there may be times when a staff member has to get in close proximity to students to help with assignments, chromebooks, etc. All staff and students will wear masks while in the building.

## Chromebooks/Devices:

- ★ Please be sure to charge chromebooks at home overnight.
- ★ It is best to charge a chromebook when it reaches 50% charge.
- ★ Students are allowed to bring their own, non-school issued, devices to school. However, there is a waiver that must be signed first. Please contact the office if you are planning to have your child bring a device that is not a school issued chromebook.

- ★ Personal devices that are not school issued can only be handled by the student. Our tech support and staff will not be able to help or handle devices that are not issued by the school.
- ★ If you still have not picked up a chromebook, please contact Mr. Simpson to set up a time to pick your child's up.

## Checklist for School:

Coming to school for hybrid learning is going to be a lot different than what our students, staff, and families are used to. To help you and your child better prepare for each day, we have put together the following checklist for what your child should bring to school each day.

- Chromebook
- Chromebook Charger (pack in chromebook carrying case)
- Headphones or earbuds
- Backpack
- Supplies provided by the school (notebooks, folders, pencils, etc)
- Mask (and a back up mask)
- Water bottle (water fountains will only be used to fill bottles, not to drink from)
- Chapstick (the mask can be drying when worn for long periods of time)
- Small pack of tissues
- Change of clothes to keep at school (preK, K, and any students that experience frequent accidents)
- A smile and positive attitude!